

Date of Publication: 3/15/2021

Rhodes to the World

Study Abroad Information Sessions

**KNOW BEFORE
YOU GO**

SUMMER STUDY ABROAD

THURSDAY, APRIL 8

6 - 7 PM CST

FALL STUDY ABROAD

FRIDAY, APRIL 9

4 - 5 PM CST

ZOOM LINK FOR BOTH MEETINGS

[HTTPS://RHODES.ZOOM.US/J/91628592171](https://rhodes.zoom.us/j/91628592171)

Know Before You Go

Join the Buckman Center for International Education if you'd like to know more about studying abroad in the Summer or the Fall on Zoom via this [link](#).

Study Abroad Group Advising Sessions

[Every Wednesday @ 13:00 CST]

International Programs Office, Room 105,
Lower Level of Burrow Hall



[Office Email](#) || [Elin Ovrebo, PhD](#) || [Erin Hillis, PhD](#) || [Danielle Sample, MS NCC](#)

[The Buckman Center for International Education](#) || Burrow Hall, Lower Level || (901) 843-3403

Rhodes to the World

Study Abroad Information Sessions

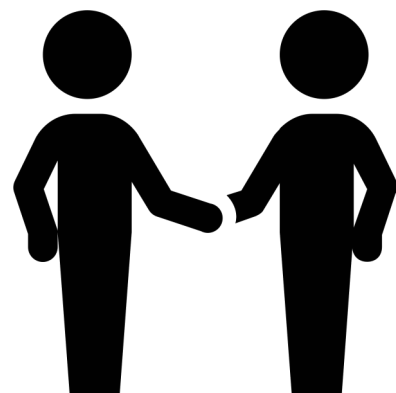
A red rectangular graphic with the word "SPREAD" in bold black capital letters, "The" in a small italicized font, and "LOVE" in large, outlined, purple capital letters.

Share our newsletter with the world!

Please spread the word about our new bimonthly newsletter packed with information to get you studying abroad. All you have to do is sign up via this [link](#).

What is an Affiliated Partner?

Since Rhodes does not currently offer any of our own faculty-led semester programs, we send students on semester programs with a number of trusted partners (AIFS, USAC, etc.). Our partner programs are either exchange programs or what we call affiliated programs. As long as you go abroad with an affiliated partner, you are still fully considered a Rhodes student while abroad – and any and all of your Rhodes financial aid will go with you. If the program includes tuition, room, and board, you pay Rhodes tuition, room, and board and all your aid applies. If the study abroad program only includes tuition, you pay Rhodes tuition. Our affiliated partners also take students on summer programs either to places where we do not have Maymesters, or if a student wants a longer summer abroad experience. Just know that institutional aid is not portable for summer programs, though some federal and/or state aid may be. Talk this over with the Financial Aid office to see if you are eligible to use any non-institutional aid abroad for the summer.



[Unsubscribe](#) here

[Office Email](#) || [Elin Ovrebo, PhD](#) || [Erin Hillis, PhD](#) || [Danielle Sample, MS NCC](#)

[The Buckman Center for International Education](#) || Burrow Hall, Lower Level || (901) 843-3403

Rhodes to the World

Rhodes Archaeology Maymester Information Session

Rhodes Archaeology Maymester

[March 15 @ 17:00 CST]

Zoom Code: 939 3502 4799

RHODES COLLEGE AND AMES PLANTATION

ENVIRONMENTAL ARCHAEOLOGICAL FIELD SCHOOL INFO SESSION

March 15 @ 5:00pm

Zoom Code: 939 3502 4799

Come learn about this experience to conduct hands-on archaeological research this summer!



19th Century Sites in Western Tennessee

July 25-August 14

4 Credits for F7 and/or F11

Tuition, Room & Board: \$2680

Any questions? Contact Prof. Kimberly Kasper (kasperk@rhodes.edu) or visit our website: <https://radicleenvironment.org/annual-field-school>

Rhodes Archaeology Maymester & Field Research in Environmental Archaeology

Native American & 19th century sites in Tennessee



July 25 - August 13, 2021

4 CREDITS for F7 and/or F11

ROOM & BOARD + CLASS = \$2,680

CONTACT: Prof. Kimberly Kasper
kasperk@rhodes.edu

or visit:
rhodes.edu/archaeologyfieldschool

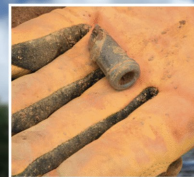


ARCE 120:
Field Research in Environmental
Archaeology
F7 Science Credit & F-11 Credit

OR

ARCE 450:
Archaeology Field School
F-11 Credit

The class & lab are held at the Ames
Plantation, 50 miles from Rhodes
College. All students live in dorms at
the field school for 3 weeks.



This course & lab focus on a
scientific understanding of the
biological & geological methods
& theories relevant to human/
environmental interaction in pre-
historic & historic sites of human
occupation. Research areas include:

- 1) environmental change & human activity
- 2) plant and animal domestication & exploitation
- 3) methods for dating artifacts

No previous experience is
needed. This is a field research
class & excavation that requires
students to live & work together
while contributing to the success
of a research project.

Enrollment is limited. Students
must apply for acceptance
via the on-line application at
rhodes.edu/afs.

For further information, contact
the program administrator, Prof.
Kimberly Kasper at
kasperk@rhodes.edu, or visit
rhodes.edu/archaeologyfieldschool



Office Email || [Elin Ovrebo, PhD](mailto:Elin.Ovrebo@rhodes.edu) || [Erin Hillis, PhD](mailto:Erin.Hillis@rhodes.edu) || [Danielle Sample, MS NCC](mailto:Danielle.Sample@rhodes.edu)

[The Buckman Center for International Education](#) || Burrow Hall, Lower Level || (901) 843-3403

Rhodes to the World

St Patrick's Day

Happy St. Patrick's Day from the [Buckman Center for International Education](#)!

[Fun Facts about St. Patrick's Day:](#)

- It is an Irish holiday, but is celebrated around the world
- St. Patrick is the patron saint of Ireland
- Celebrated on March 17th, the anniversary of St. Patrick's death
- Has been celebrated for over 1,000 years
- 1st parade was held in 1601 in the United States
- For many years, the color blue was associated with this holiday, but now we celebrate by wearing green

[St. Patrick's Day Around the World](#)

[Sydney, Australia](#) - The Rocks, a neighborhood in Sydney transforms into an Irish Village with food and music to celebrate the holiday while the Sydney Opera house is lit green for the special occasion.



[Chicago, Illinois](#) - While there are Irish dancers and bagpipe players present on the streets of Chicago, it is really the river that draws people in. The Chicago River is dyed green for St. Patrick's Day!

[Dublin, Ireland](#) - Dublin hosts the largest parade and street festival in Ireland for the holiday. As for the visitors, over half of Ireland's entire population travels to Dublin to celebrate St. Patrick's Day.



[Office Email](#) || [Elin Ovrebo, PhD](#) || [Erin Hillis, PhD](#) || [Danielle Sample, MS NCC](#)

[The Buckman Center for International Education](#) || Burrow Hall, Lower Level || (901) 843-3403

Rhodes to the World

Study Abroad Opportunities for Archaeology Majors

SIT Study Abroad Iceland (Fall 2021)

Apply by 05/01/21

Rhodes Tuition, Room, Full Board

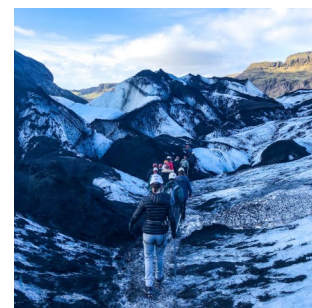
Decision Date - TBA

Language of instruction - English

Program Starts 08/14/21

Housing - Homestay

Program Ends 11/23/21



ISEP Ghana (Fall 2021)



Apply by 05/15/21

Rhodes Tuition, Room, and Full Board

Decision Date - TBA

Language of instruction - English

Program Starts 08/2021

Housing - Residential Hall

Program Ends 12/2021

Minimum GPA - 2.75

ISEP Italy (Spring 2022)

Apply by 09/15/21

Rhodes Tuition, Room, and Full Board

Decision Date - Rolling

Language of instruction - English

Program Starts 02/2022

Housing - Residential Hall, Shared Apartment

Program Ends 07/2022

Minimum GPA - 2.75

Find more options for Archaeology and all majors at [The Buckman Center for International Education](#)

[Office Email](#) || [Elin Ovrebo, PhD](#) || [Erin Hillis, PhD](#) || [Danielle Sample, MS NCC](#)

[The Buckman Center for International Education](#) || Burrow Hall, Lower Level || (901) 843-3403

Rhodes to the World

Studying Abroad from a Rhodes Global Diplomat



Name: Adam Wyatt

Class Year: 2021

Major: Greek and Roman Studies

Studied Abroad in: Intercollegiate Center for Classical Studies in Rome

About his experience:

Hi, I'm Adam Wyatt, a senior Greek and Roman Studies major. In Fall 2019, I studied as a Buckman Fellow at the Intercollegiate Center for Classical Studies in Rome. The primary course examined the remnants of ancient Roman civilization from the legendary Roman Kingdom until the collapse of the Western Roman Empire. I also had the opportunity to intern at the American Academy in Rome, working in the collections department to handle and catalogue ancient artifacts.



[Office Email](#) || [Elin Ovrebo, PhD](#) || [Erin Hillis, PhD](#) || [Danielle Sample, MS NCC](#)

[The Buckman Center for International Education](#) || Burrow Hall, Lower Level || (901) 843-3403

Rhodes to the World

Affiliated Partners' Study Abroad Information Sessions

SIT: Study STEM Abroad

[March 15 @ 14:00 - 14:45 CST]

Follow the link above to register



SIT Study Abroad

a program of World Learning



USAC: Studying Abroad with USAC

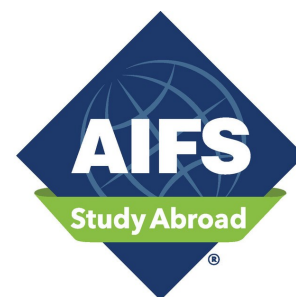
[March 16 @ 12:00 CST]

Follow the link above to register

AIFS: Drop-In Information Table

[March 17 @ 15:00 - 17:00 CST]

Follow the link above to register



USAC: Drop-In Advising

[March 17 @ 12:00 - 14:00 CST]

Follow the link above to register

[Office Email](#) || [Elin Ovrebo, PhD](#) || [Erin Hillis, PhD](#) || [Danielle Sample, MS NCC](#)

[The Buckman Center for International Education](#) || Burrow Hall, Lower Level || (901) 843-3403

Rhodes to the World

Affiliated Partners' Study Abroad Information Sessions



AIFS: Drop-In Information Table

[March 24 @ 15:00 - 17:00 CST]

Follow the link above to register

API: Summer 2021 Programs

[MARCH 29 @ 12:00 - 13:00 CST]

Follow the link above to register



THE OREGON EXTENSION REMINDER:

Early Application Deadline: March 30 2021

This is a Rhodes Affiliated Program that is off campus for the Fall 2021 Semester. More information can be found at this [link](#).

[Office Email](#) || [Elin Ovrebo, PhD](#) || [Erin Hillis, PhD](#) || [Danielle Sample, MS NCC](#)

[The Buckman Center for International Education](#) || Burrow Hall, Lower Level || (901) 843-3403